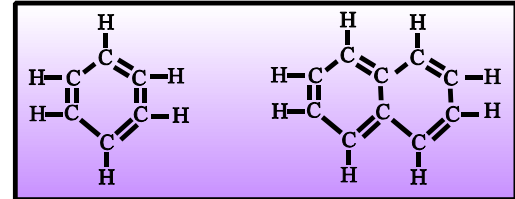
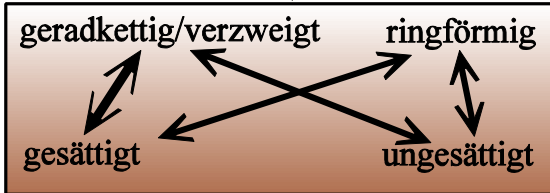


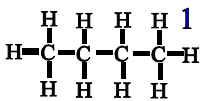
Kohlenwasserstoffe

aliphatisch

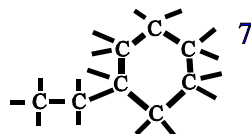
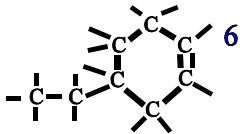
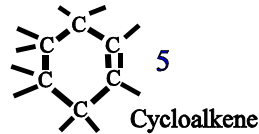
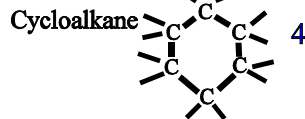
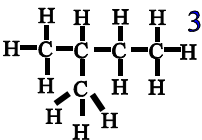
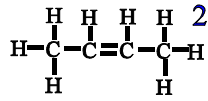
aromatisch



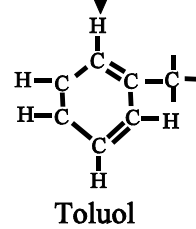
Alkane



Alkene



Benzol-Ring



kondensierte
aromatische
Ringe
Naththalin

Legende:

- 1: geradkettige Alkane
- 2: geradkettige Alkene
- 3: verzweigte Alkane
- 4: Cycloalkane
- 5: Cycloalkene
- 6: verzweigte Cycloalkene
- 7: verzweigte Cycloalkane